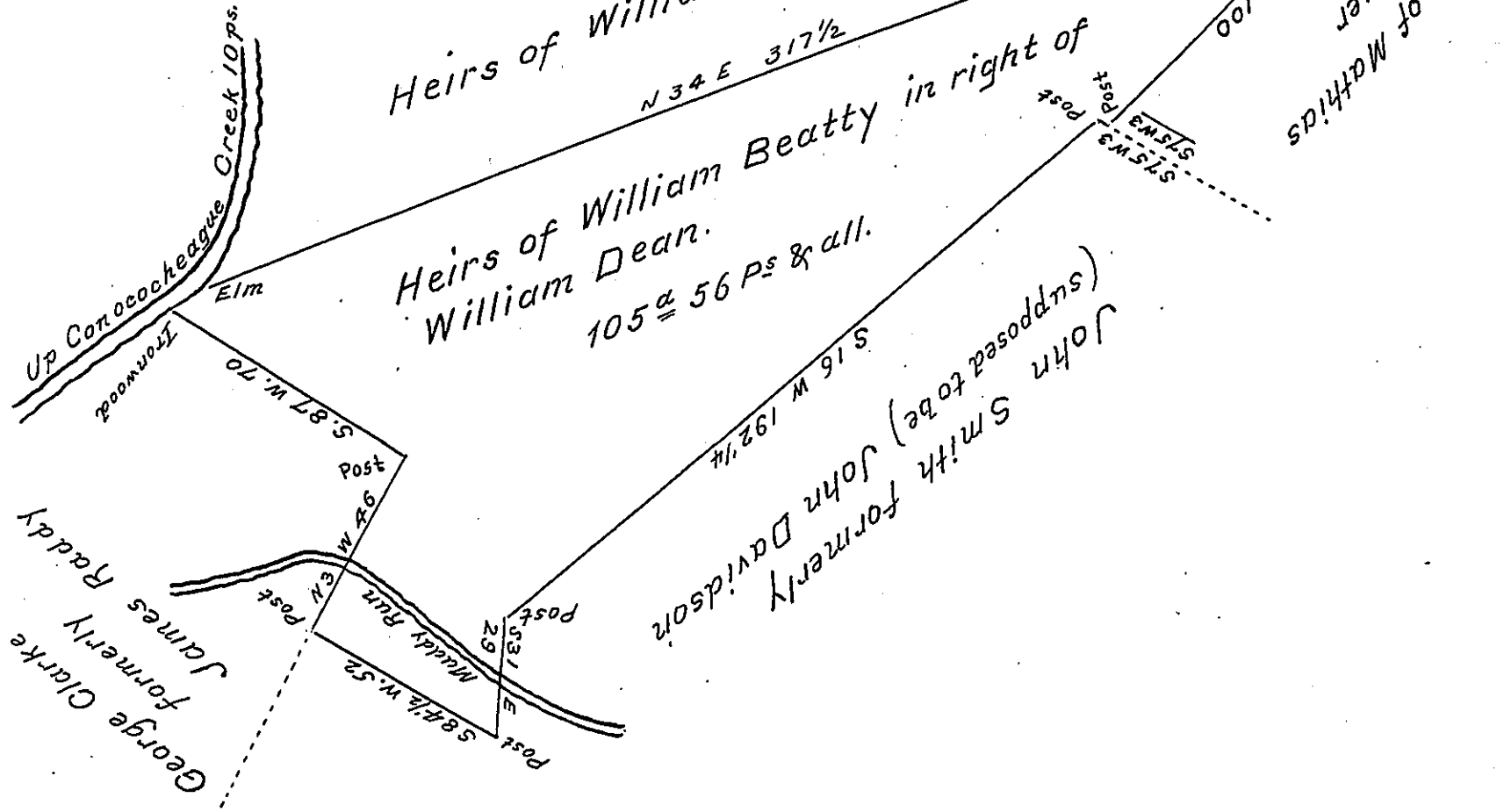


Course up the Creek
N 31 E 10 P. to an Elm.



Draught of a Tract of Land situate in Antrim Township Franklin
 County (formerly Cumberland County) Containing one hundred and
 five acres & fifty six perches & and allowance of six $\frac{1}{2}$ Cent for roads
 agreeable to the old lines
 &c. Surveyed November 5th 1814 In — pursuance of a Warrant Grant-
 ed William Dean for 100^a Dated the first day of August 1766

Arch^d Fleming D. S.

Rich^d T Leech Esq^r

Surveyor General of Penn^a.

IN TESTIMONY that the above is a copy of the original remaining on file in
 the Department of Internal Affairs of Pennsylvania, made
 conformably to an Act of Assembly approved the 16th day of
 February, 1833, I have hereunto set my Hand and caused
 the Seal of said Department to be affixed at Harrisburg,
 this fifth day of August 1904

George B. Brown
 Secretary of Internal Affairs.